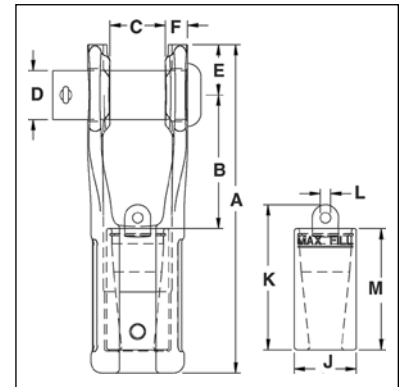


# Button Spelter Sockets

## SB-427



- Available in six sizes from 13mm - 38mm.
- Button Spelter terminations have a 100% efficiency rating, based on the catalog strength of the wire rope.
- Designed for use with mobile cranes. Can be used to terminate high performance, rotation resistant ropes, and standard 6 strand ropes.
- Easy to install assembly utilizes Crosby® WIRELOCK® socketing compound.
- Sockets and buttons are re-usable.
- Replacement buttons and sockets are available.
- Locking feature available to prevent rotation of rope.
- Button contains cap with eye that can be attached to, and used to pull, rope during reeving process.



## SB-427 Button Spelter Sockets

Wire Rope Size		SB-427 Stock No.	Ultimate Load (t)	Weight Each (kg)	Socket Only Stock No.	Button Only Stock No.	Dimensions (mm)										Tolerance +/- C
(mm)	(in.)						A	B	C	D	E	F	J	K	L	M	
13-16	1/2 - 5/8	1052005	27	2.76	1052107	1052309	202	82	33	30	31	14	38	89	6	74	1.52
16-19	5/8 - 3/4	1052014	45	4.67	1052116	1052318	240	99	39	35	37	17	44	109	10	87	1.52
19-22	3/4 - 7/8	1052023	57	7.75	1052125	1052327	275	112	45	41	43	19	52	121	10	101	1.52
22-26	7/8 - 1	1052032	82	13.24	1052134	1052336	327	139	52	51	51	23	62	143	16	115	2.29
28-32	1-1/8 - 1-1/4	1052041	136	20.86	1052143	1052345	378	144	64	57	64	28	75	180	19	145	2.29
35-38	1-3/8 - 1-1/2	1052050	161	35.38	1052152	1052354	459	182	77	70	70	31	92	205	19	172	2.29

## SB-427TB (Bolt, Nut and Cotter Pin)

Wire Rope Size		SB-427 Stock No.	Ultimate Load (t)	Weight Each (kg)	Socket Only Stock No.	Button Only Stock No.	Dimensions (mm)										Tolerance +/- C
(mm)	(in.)						A	B	C	D	E	F	J	K	L	M	
13-16	1/2 - 5/8	1052406	27	2.76	1052107	1052309	202	82	33	30	31	14	38	89	6	74	1.52
16-19	5/8 - 3/4	1052415	45	4.67	1052116	1052318	240	99	39	35	37	17	44	109	10	87	1.52
19-22	3/4 - 7/8	1052424	57	7.75	1052125	1052327	275	112	45	41	43	19	52	121	10	101	1.52
22-26	7/8 - 1	1052433	82	13.24	1052134	1052336	327	139	52	51	51	23	62	143	16	115	2.29
28-32	1-1/8 - 1-1/4	1052442	136	20.86	1052143	1052345	378	144	64	57	64	28	75	180	19	145	2.29
35-38	1-3/8 - 1-1/2	1052451	161	35.38	1052152	1052354	459	182	77	70	70	31	92	205	19	172	2.29

## Wirelock Requirements

Wire Rope Size		WIRELOCK Required (cc)	WIRELOCK Stock No.	WIRELOCK Kit Size (cc)
(mm)	(in.)			
13-16	1/2 - 5/8	35	1039602	100
16-19	5/8 - 3/4	60	1039602	100
19-22	3/4 - 7/8	100	1039602	100
22-26	7/8 - 1	140	1039602*	100
28-32	1-1/8 - 1-1/4	250	1039604	250
35-38	1-3/8 - 1-1/2	420	1039606	500

\* 2 kits required.



Scan this QR code with your smart device to view our Wedge and Button Sockets video.

**APPLICATION INSTRUCTIONS**  
SEE PAGE 55 OF THE GENERAL CATALOG