

DT500 'HORIZONTAL LIFTING' DRUM TONGS



The **DT drum tongs** have been designed for use when lifting and transporting drums in the horizontal position.

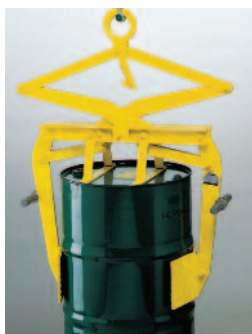
To use these tongs you simply attach the jaws below the rolled edge on either end of the drum and lift the handle upwards. The drum is then ready to lift. The weight of the drum on the tong jaws prevents the jaws from opening.

To release the tongs simply place the drum on the ground and push downward on the lever.

NB: These tongs are designed for use with STEEL DRUMS only.

Model	WLL kgs	Drum length mm	Weight kgs	Price £
DT	500	600 - 900	5.5	£210

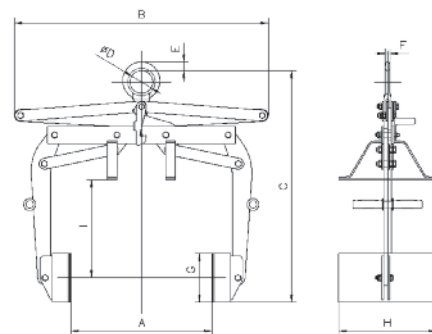
DBV300 DRUM GRAB



The **DBV300 drum grab** has been designed for the transportation of upright barrels.

This unit grabs upright barrels and sets them down in the same position. The clamping jaws are fitted with a hard rubber lining to provide a friction hold. There is a form-locking feature on the drum hoop that provides extra safety. This additional feature is indispensable if the surface of the barrels is stained with oil or grease.

NB: These grabs are designed for use with STEEL DRUMS only.



Model	WLL kg	Jaw Capacity Ø mm	A mm	B mm	C mm	D mm	E mm	F mm	G mm	H mm	I mm	Weight kg	Price £
DBV300	300	400 - 600	630	1040	950	90	34	15	200	400	400	65	£1063

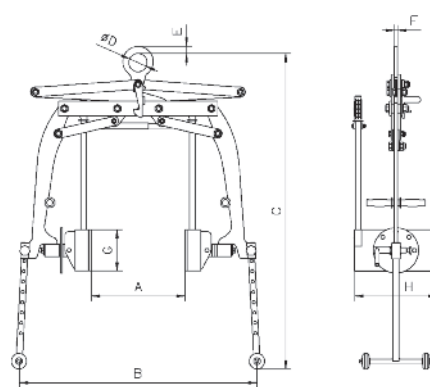
DBT300 DRUM GRAB



The **DBT drum grab with tipping device** has been designed for the transportation, lifting, placing down, turning over and emptying of barrels.

In order to tip the drums easily, they must be picked up at the correct centre of gravity.

NB: These grabs are designed for use with STEEL DRUMS only.



Model	WLL kg	Jaw Capacity Ø mm	A mm	B mm	C mm	D mm	E mm	F mm	G mm	H mm	Weight kg	Price £
DBT	300	400 - 600	630	1150	1525	90	34	15	200	400	83	£1327