

## HG 'HIGH GRIP' VERTICAL PLATE CLAMPS



### Vertical 'high grip' plate clamps for hardened material

**Working load limit (WLL) 500 - 4000kg**

HG plate clamps have an extremely high clamping force which makes the clamps particularly suited to the transport of plate with a surface hardness up to HRC 40/Brinell 375.

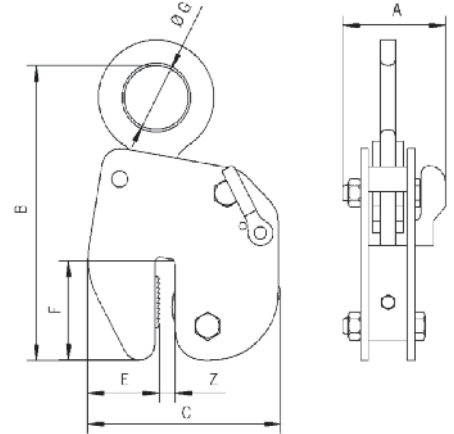
**NB: The plate surface of the material must have a hardness level below HRC 40/Brinell 375.**

#### Function

These clamps are opened and closed with a locking lever. The safety lock spring loads the cam jaw, preventing the clamp from opening even when there is no load on the jaw.

#### Workmanship and parts

These plate clamps are service-friendly, making it easy to exchange parts, which are readily available. Clamp repairs are available through the factory, or can be done by a competent person.



Model	WLL kg*	Jaw (Z) capacity mm	A mm	B mm	C mm	D mm	E mm	F mm	G mm	Weight kg**	Price £*
HG500	25 - 500	0 - 10	42	230	148	10	55	79	50	5	<b>£331</b>
HG1000	50 - 1000	0 - 16	93	297	210	16	75	114	67	12	<b>£397</b>
HG2000	200 - 2000	0 - 20	110	416	305	20	102	159	80	22	<b>£549</b>
HG3000	300 - 3000	0 - 20	110	416	305	20	102	159	80	28	<b>£619</b>
HG3000L	300 - 3000	20 - 40	110	416	325	20	102	159	80	28	<b>£646</b>
HG4000	400 - 4000	0 - 20	120	335	305	20	102	159	80	34	<b>£810</b>
HG4000L	400 - 4000	20 - 40	120	335	325	20	102	159	80	34	<b>£850</b>

\*Per clamp.

\*\*Weight per clamp.

## TJC 'TWIN JAW' VERTICAL PLATE CLAMPS



The TJC twin jaw vertical plate clamps have been specifically designed for lifting steel plates. The main difference, however between the TJC and the CZ (which is our standard vertical plate clamp) is that the TJC has a unique twin moving jaw arrangement.

The design of the twin moving jaws means that the TJC can be used in applications that require a larger than usual jaw capacity but with a low minimum weight.

**NB: The plate surface of the material must have a hardness level below HRC 30/Brinell 300.**

Model	WLL kg*	Jaw capacity mm	Weight kg**	Price £*
TJC300	20 - 300	0 - 30	3	<b>£265</b>
TJC300L	20 - 300	30 - 60	3	<b>£303</b>
TJC300XL	20 - 300	60 - 90	4	<b>£351</b>
TJC300XXL	20 - 300	80 - 110	5	<b>£418</b>

Please contact our sales team for full technical drawings if required.

\*Per clamp. \*\*Weight per clamp.